



Your regional education partner

Mobile Campus

Increasing access to Skills and Jobs and higher education in regional Victorian communities.



**GOTAFE is committed
to providing a safe and
inclusive environment,
free from discrimination.**

**We embrace our Social Justice Charter,
which articulates how we ensure equality
and inclusivity for all. We acknowledge
Aboriginal and Torres Strait Islander people
as Australia's First Peoples and as traditional
owners and custodians of this land.**

**We celebrate diversity and value the lived
experience of people of every ethnicity, faith,
age, disability, culture, language, gender
identity, sex and sexual orientation.**



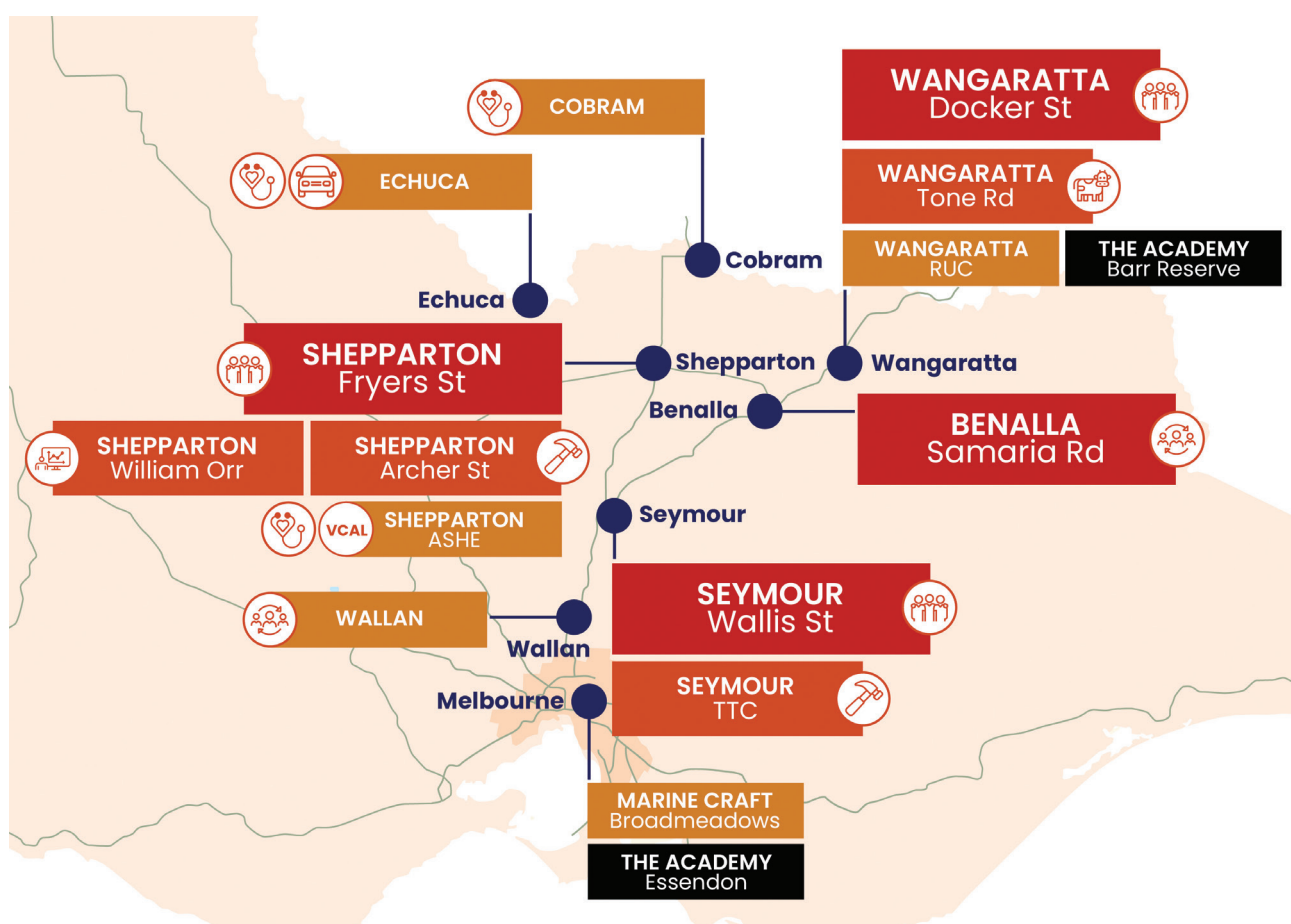
• EQUITY • RESPECT • PARTICIPATION •
• DIVERSITY • EMPOWERMENT •



GOTAFE strives to be more than an education facility; we aim to enable people to realise their potential and enhance their communities.

Key Facts:

- GOTAFE is the largest vocational education provider in regional Victoria
- We are a leader in delivering quality, practical education, and training
- GOTAFE offers 130 courses across eight campus locations
- We deliver work ready, skilled graduates who meet industry needs



KEY



Trades



VCAL



Community & Enterprise



Animal Wellbeing & Agri-tourism



Health



Automotive



Ag Technology & Innovation



Community Support, Delivery & Pathways

GOTAFE is committed to

Quality Education

We provide quality, learner-centred education to help students reach their full potential.

Student Experience

We put student experience at the centre of everything we do.

Drive Growth

We work with local industry and community partners to drive growth.



Study Areas



Business
& IT



Health &
Community



Land &
Animals



Creative



Hospitality
& Baking



Manufacturing
& Work Safety



Education

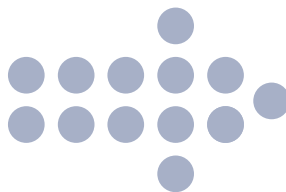


Hair &
Beauty



Technical
Trades





Vision:

**Increase the level of education and training
and decrease the level of unemployment in regional Victoria.**

Purpose:

**Supporting businesses, individuals and community organisations
with expert advice about training and employment.**

Strategic goals and objectives

✓ Increase access across regional Victorian communities

- Provide access to Skills and Jobs services in communities where access is a barrier
- Create a welcoming, inclusive, and accessible mobile campus for regional Victorian communities

✓ Empower and support

- Help community and individuals to identify and achieve their training and employment goals and build aspiration
- Support individuals to identify personal skills, strengths and capabilities
- Connect communities and individuals to activities, services and opportunities that will assist them in achieving their training and employment goals

✓ Strengthen partnerships with local community and industry

- Develop partnerships with local stakeholders, organisations and business that can support positive employment outcomes
- Engage, connect and support community with services that provides holistic and coordinated support
- Provide referrals to other services in the local area who can help, such as financial advice, welfare and employment support

What is the GOTAFE Mobile Campus?



The Mobile Campus is a large expandable trailer that is relocatable and will move amongst our regional Victorian communities.

A key challenge to delivering services across such a widespread geographical footprint is the ability to engage with everyone and particularly those in remote communities.

GOTAFE is committed to playing a lead role in supporting, connecting and to responding to local employment and education services, regardless of location, access, and financial challenges. At the heart of this response is a new purpose-built mobile campus.

The Mobile Campus will connect with communities across the north and central regions of Victoria that don't have the opportunity to easily engage with training, career and TAFE services.

Working in partnership with local government and tapping into job active networks and financial support services, the Mobile Campus will take a community centred approach to service delivery.

The Mobile Campus has a visitor reception area, a private counselling/meeting space, a workshop delivery space and a community computer lab.

GOTAFE have mapped out a schedule that is located on the website. You can request a visit from the mobile campus to your town. GOTAFE may also be able to visit your worksite or school to discuss opportunities for your students/employees and assist with career planning.

The Mobile Campus will enable GOTAFE to strengthen relationships in the communities we serve. It will assist us to build partnerships that find solutions to local industry skills needs and community employment outcomes.



The GOTAFE Mobile Campus has four key service delivery elements:



Skills and Jobs Centre services

- Provide course advice and referrals
- Deliver qualified career counselling
- Provide referrals to local community services



Education and training

- On-site training and course delivery



Events and attraction

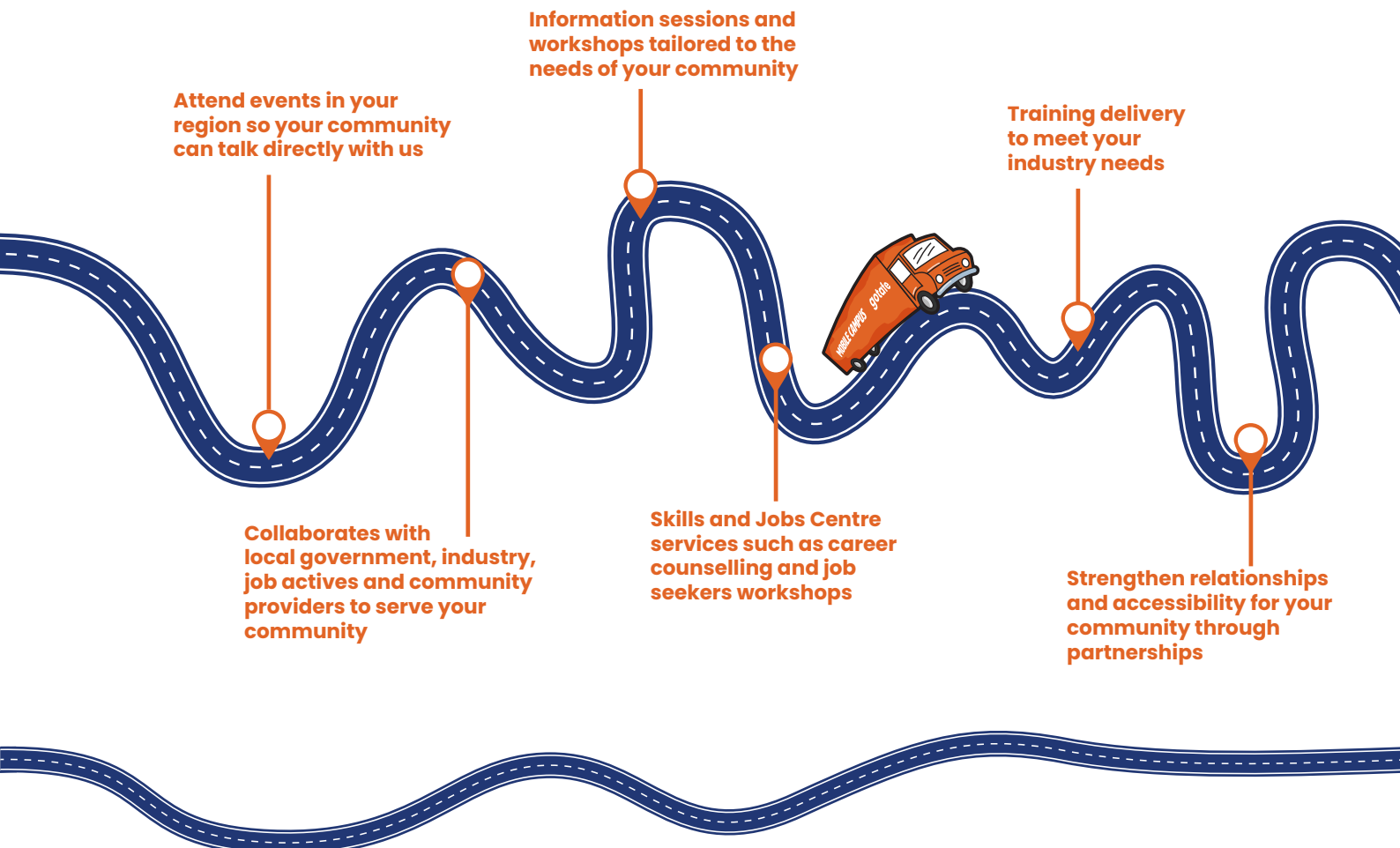
- Attending and supporting industry events e.g Elmore Field Days, Seymour Alternative Farming Expo



Partnerships and community

- Opportunities to create two-way conversations with our key stakeholders and partners

What does the GOTAFE Mobile Campus do?



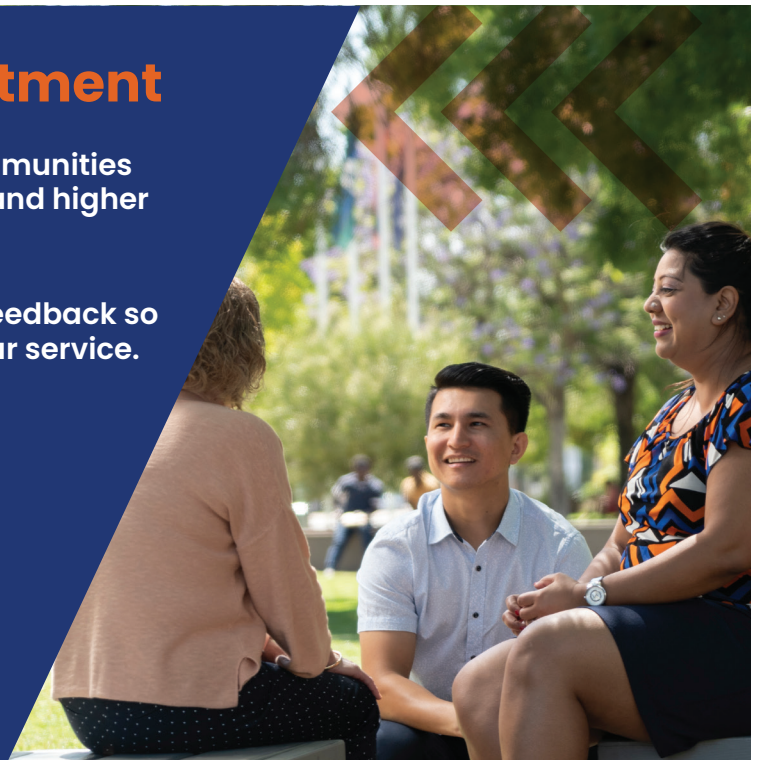
People we support

GOTAFE supports nearly 10,000 students each year. We have dedicated student, career and youth advisors who support people throughout their education journey to their career aspirations.

GOTAFE works to empower all Victorians to be their best selves and find their career calling.

Our Service commitment

- We will provide outreach to communities where access to skills and jobs and higher education services is a barrier.
- We will seek regular input and feedback so we can continuously improve our service.
- We will go above and beyond for the community and the individual.
- We work with community and tailor our information and services to meet needs at a local level.



Stakeholder engagement

At GOTAFE we work to build strong local partnerships with industry, employers and the local community. We engage with local community leaders to ensure we deliver to the needs of that location.

The Mobile Campus will be delivered by a team who take the time to listen, start conversations and find the best pathway or outcome for each individual.

We will tap into these conversations—gather real time feedback, to ensure we are focused on what is important. Working in partnership with our communities will allow the Mobile Campus to improve training participation and employment opportunities in our region.



Inform

- Introduce the Mobile Campus to the community
- Advise key local stakeholders
- Promote the visit – posters, website, letterbox drops

Consult

- Speak to local stakeholders on timing, location and services to be delivered
- Obtain local knowledge and support
- Input so GOTAFE can design community profiles

Involve

- Participate in community and stakeholder events
- Invite community and stakeholders into Mobile Campus

Collaborate

- Consolidate engagement outcomes, informing a deeper understanding of community
- Develop future programs and services to support community
- Continue support for individuals engaged

Empower

- Provide a platform for stakeholders to give feedback and information
- Enable stakeholders to get support where they live





*GOTAFE strives for inclusion
by design, not by accident.*

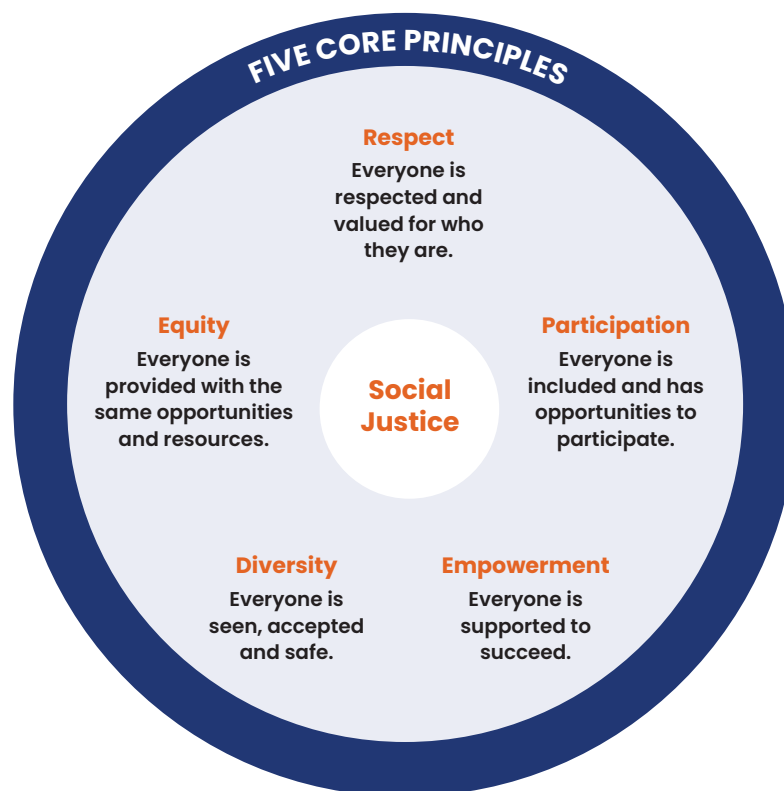
Ro Allen

Victorian Equal
Opportunity and Human
Rights Commissioner



Access and inclusivity

The Mobile Campus supports the ethos of the GOTAFE Social Justice Charter. GOTAFE is committed to equity and celebrating diversity, recognising that social structures mean that not everybody has had the same opportunities. GOTAFE will lead the education sector to make sure that all students, staff, teachers, trainers and the broader community are treated with fairness and respect, valuing the diversity of the community.



Skills and Jobs Centres

Skills and Jobs Centres should be the first port-of-call when you are looking to enter the workforce, start training, re-skill, or for employers to meet their workforce needs.

The Centres provide free, impartial and expert career planning advice. The services are available to everyone, so you don't have to be a GOTAFE student or partner to access the support you need.

The GOTAFE Skills and Jobs team can assess your skills and strengths, share job-hunting tips, and provide advice so you can find a job that best suits you and your strengths.

Skills & Jobs Centres work alongside local industry and communities to provide expert advice and assistance on training and employment opportunities.

Skills and Jobs Centres provide expert advice on training and employment opportunities, including:

- Identifying training qualifications for a successful career transition
- Assistance in using existing skills to align to a new job or to undertake new training (Recognition of Prior Learning)
- Information on local employment trends and areas with skills shortages
- Creating a personal career plan or training pathway
- Referrals to other service providers

The Centres also engage with a broad range of local industries, ensuring that the centres are tailored to meet the needs of their local communities and industries.

We're available to visit and talk about our services. Get in touch with us to find out more.



**"Transfer your skills,
Transform your life"**



**SKILLS
AND JOBS
CENTRES**



"Get the right advice at
a Skills and Job centre"

"One stop shop"

"We'll help you find
your way"

Your regional
education partner



Thank you to our partner:



LA TROBE
UNIVERSITY

gotafe



gotafe.vic.edu.au
1300 GOTAFE (468 233)
enquiry@gotafe.vic.edu.au
Version 2. August 2021.

RTO 3094